



Safety

R3 RELIABLE REDISTRIBUTION RESOURCE®

# GUARDIAN FALL PROTECTION

## Series 1 Harness



### Guardian Series 1 Harness

- Perfect entry-level harness solution
- Captivated chest strap
- Dual lanyard keepers
- 2-Bar torso adjuster
- Rubber web ends
- Impact indicator
- Polyester webbing
- Galvanized Steel D-ring
- Capacity: 130-420 lbs

R3 #	Mfg #	Description	Size
K62400141	37000	Chest & Leg Pass-Through Buckles	XS-S
K62400131	37001	Chest & Leg Pass-Through Buckles	M-L
K62400121	37002	Chest & Leg Pass-Through Buckles	XL-2XL
K62400111	37016	Chest Quick-Connect, Leg Tongue Buckles	XS-S
K62400101	37017	Chest Quick-Connect, Leg Tongue Buckles	M-L
K62400091	37018	Chest Quick-Connect, Leg Tongue Buckles	XL-2XL

## Series 3 Harness



### Guardian Series 3 Harness

- Focuses on comfort and performance
- Captivated chest strap
- Lanyard keepers
- Heavy-duty waist pad
- Spring torso adjuster
- Snap-on shoulder padding
- SRL connector loop
- Impact indicator
- Polyester webbing
- Galvanized Steel D-ring
- Capacity: 130-420 lbs

R3 #	Mfg #	Description	Size
K62400081	37116	Chest Quick-Connect, Leg Tongue Buckles	XS-S
K62400071	37117	Chest Quick-Connect, Leg Tongue Buckles	M-L
K62400061	37118	Chest Quick-Connect, Leg Tongue Buckles	XL-2XL
K62400051	37196	Chest Quick-Connect, Leg Tongue Buckles, & Waist Pad	XS-S
K62400041	37197	Chest Quick-Connect, Leg Tongue Buckles, & Waist Pad	M-L
K62400031	37198	Chest Quick-Connect, Leg Tongue Buckles, & Waist Pad	XL-2XL



### Guardian Velocity Full-Body Harness

- 5 Points of adjustment
- Pass-through chest strap
- Tongue buckle leg straps
- Dorsal D-ring
- Padded D-ring placard
- Impact indicator
- Sub-pelvic strap
- Contrasting core webbing to indicate wear and aid inspection
- Dual lanyard keepers
- Capacity: 130-420 lbs.

R3 #	K62400411	01703	Dorsal D-Ring	Size: S-L
R3 #	K62400401	01704	Dorsal D-Ring	Size: XL-2XL
R3 #	K62400391	01705	Side D-Rings	Size: XL-2XL



### Guardian Seraph Construction Harness w/Side D-Rings

- Heavy duty and comfortable waist pad with strong belt loops
- Reinforced tool belt which won't sag or fold under heavy weights
- Dorsal D-ring
- Pass-through chest strap
- Tongue-buckle leg straps
- Two lanyard keepers
- Durable back placard
- Removable/replaceable back and shoulder padding

R3 #	K62400201	11173	Size: M-L
R3 #	K62400211	11171	Size: XL-2XL



### Guardian 21034 Cyclone Construction Harness w/ Side D-rings

- Quick-connect chest strap
- Quick-connect leg buckles
- Waist Tongue Buckle
- Galvanized steel D-rings
- Padded D-ring placard
- Impact Indicator
- Side D-rings
- Polyester and nylon webbing
- Capacity: 130-420 lbs.

R3 #	K62400151	21034	Size: M-L
------	-----------	-------	-----------

# Anchor Points



## Guardian 00101 Beamer® 2000 Fall Arrest Anchor

- Fits 3.5" - 14" beams (up to 1.25" thick)
- Min. Breaking Strength: 5,000 lbs.
- Perfect for use overhead or at foot level
- Lightweight and durable
- Moves smoothly along beam
- Worker Capacity: 130-420 lbs.
- R3 # K62400571



## Guardian 00360 D-Ring 2 Hole Anchor Plate

- Easy to install
- Plate size: 2" x 4.25"
- Min. Breaking Strength: 5,000 lbs.
- Stainless steel and zinc plated steel
- Bolt or weld to structure
- Compatible with horizontal lifelines
- Worker Capacity: 130-420 lbs.
- R3 # K62400561



## Guardian 00455 Temper Anchor

- Reusable anchorage connector designed for temporary use on wood rooftops
- Fits all roof pitches from flat to sheer
- Easy to install
- Lightweight and durable
- Fits roof pitches from 0/12-Sheer
- Material: zinc plated steel
- Min. Breaking Strength: 5,000 lbs.
- Worker Capacity: 130-420 lbs.
- R3 # K62400541



## Guardian 00432 Truss Boss Anchor

- Anchorage connector ideal for fall arrest and restraint applications
- Easy to install
- Lightweight and durable
- Installs upright or inverted
- Zinc plated and galvanized steel
- Worker Capacity: 130-310 lbs. - or up to 420 lbs. if used in combination with equipment explicitly certified for such use
- R3 # K62400551



## Guardian 00500 Ridge-It Anchor

- Designed for permanent use on wood rooftops
- 9.75" Single D-ring
- Easy to install
- Discreet design
- Stainless steel, Zinc-plated steel and Butyl
- Min. Breaking Strength: 5,000 lbs.
- Worker Capacity: 130-420 lbs.
- R3 # K62400531



## Guardian 00645 CB-12 Anchor Point

- Intended for permanent applications
- No swivel
- Compatible for Installation onto wood, steel, and concrete substrates
- Compatible with horizontal lifelines
- Material: galvanized steel
- Min. Breaking Strength: 5,000 lbs.
- Worker Capacity: 130-420 lbs.
- R3 # K62400521



## Guardian 10705 Concrete Anchor Strap

- Heavy duty nylon webbing to protect the inner core from abrasion and wear
- Easy to install
- Durable and lightweight
- Compatible with horizontal lifelines
- D-ring end
- Length: 3'
- Min. Breaking Strength: 5,000 lbs.
- R3 # K62400311



## Guardian 01620 Cross Arm Strap

- Reusable anchorage connector that can be used in a variety of fall protection applications
- Pass-Through Loop Ends
- Length: 6'
- Min. Breaking Strength: 5,000 lbs.
- R3 # K62400421



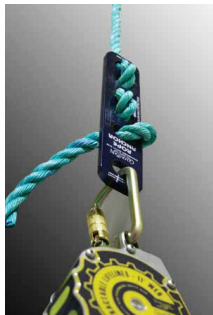
## Guardian 00656 CB-18 Anchor Point (Concrete)

- Intended for permanent applications
- No swivel
- Installation onto concrete substrates
- Compatible with horizontal lifelines
- Material: galvanized steel
- Min. Breaking Strength: 5,000 lbs.
- Worker Capacity: 130-420 lbs.
- R3 # K62400511



## Guardian 00657 CB-18 Anchor Point (Wood And Steel)

- Intended for permanent applications
- No swivel
- Installation onto wood and steel
- Compatible for use with SRLs, vertical lifelines, horizontal lifelines, and shock absorbing lanyards
- Min. Breaking Strength: 5,000 lbs.
- R3 # K62400501



## Guardian 01300 Rope Anchor

- Vertical life line anchor point
- Functions to integrate an anchorage connector with a vertical lifeline system
- Easy instructions for tie-off
- Material: aluminum
- Compatible with 5/8" rope only
- Min. Breaking Strength: 5,000 lbs.
- Worker Capacity: 130-420 lbs.
- R3 # K62400441



## Guardian 10787 6' Premium Cross Arm Strap

- Reusable anchorage connector that can be used in a variety of fall protection applications
- Reinforced webbing for superior durability and functionality
- Min. Breaking Strength: 5,000 lbs.
- Worker Capacity: 130-420 lbs.
- R3 # K62400281

# Self-Retracting Lifelines & Lanyards



## Guardian 10900 11' Halo Web SRL w/ Steel Snap Hook

- Designed with a specialized quick-action braking system
  - Manufactured from non-corrosive, lightweight components
  - Extremely durable and compact
  - Galvanized steel, polyester and nylon
  - Swivel top
  - Capacity: 130-310 lbs.
- R3 # K62400261



## Guardian 10915 30' Halo Web SRL w/ Steel Snap Hook

- Designed with a specialized quick-action braking system
  - Manufactured from non-corrosive, lightweight components
  - Extremely durable and compact
  - Swivel top
  - Galvanized cable
  - Capacity: 130-310 lbs.
- R3 # K62400251



## Guardian 11080 6' Diablo Web SRL 2.0

- Lightweight and durable
  - Fits in the palm of your hand, now with an even smaller housing
  - Carabiner included
  - Steel Snap Hook
  - Polyester and nylon lifeline
  - Capacity: 130-420 lbs.
- R3 # K62400231



## Guardian 01600 24" Rebar Chain Assembly

- Lightweight and durable
  - Perfect for work positioning
  - Double legs allow workers to lean away from walls, while keeping their hands free to perform any necessary work
  - Swivel
  - Galvanized steel and rebar
  - Non-Swivel Steel Snap Hooks
  - Capacity: 130-310 lbs.
- R3 # K62400431



## Guardian 10925 30' Halo Cable SRL-LE

- Designed specifically for Leading Edge (LE) work
  - Carabiner included
  - Integrated shock absorbing component
  - Galvanized steel lifeline
  - Steel Snap Hook
  - Swivel top
  - Boot cover
- R3 # K62400241



## Guardian 11087 6' Double Diablo Web SRL 2.0

- Lightweight and durable
  - Fits in the palm of your hand, now with an even smaller housing
  - Steel Rebar Hooks
  - Carabiner included
  - Galvanized and zinc plated steel
  - Polyester and nylon lifeline
  - Capacity: 130-310 lbs.
- R3 # K62400221



## Guardian 10726 Tool Lanyard with Mini Carabiner

- Locking carabiner is self-locking and self-closing
  - Certified to carry tools up to 20 pounds in combined weight
  - Install to a tool belt or around the wrist
  - Helps reduce falling object related injuries
  - Securely attach tools to wrist or tool belt
  - Provides ease & versatility
- R3 # K62400301



## Guardian 11200 6' Internal Shock Lanyard w/ Steel Snap Hook

- Heavy duty outer polyester webbing
  - Shock absorption is built directly into the lanyard
  - Single Leg
  - Steel Snap Hook
  - Capacity: 130-310 lbs.
- R3 # K62400191



## Guardian 01298 Stretch Lanyard

- Lightweight and durable
  - Lanyard stretch reduces potential tripping hazards
  - Double Leg
  - Steel Rebar Hook
  - Polyester and nylon
  - Length: 4.5' - 6'
- R3 # K62400451



## Guardian 01220 6' External Shock Lanyard

- 1" Nylon web
  - Clear shock pack for easy inspection
  - 3,600 lb. connector gate
  - Single Leg
  - Steel Snap Hook
  - Nylon, Polyester and galvanized steel
  - Meets all the stringent ANSI Z359.13-2013 regulations
  - Capacity: 130-310 lbs.
- R3 # K62400461



## Guardian 11203 6' Internal Shock Lanyard w/ Steel Rebar Hooks

- Heavy duty outer polyester webbing
  - Shock absorption is built directly into the lanyard
  - Double Leg
  - Steel Rebar Hook
  - Capacity: 130-310 lbs.
- R3 # K62400181



## Guardian 10733 Trauma Strap

- Allows the fallen worker to assume a standing position and relieve pressure on the lower extremities
  - Allows better blood flow and reduces fatigue
  - Easy to adjust
  - Low profile keeps it out of the way during work
  - Nylon, Polyester and steel
  - Worker Capacity: 420 lbs.
- R3 # K62400291



## Guardian 01122 18" Non-Shock Absorbing Extension Lanyard

- Convenient option of lengthening a full-body harness dorsal D-ring
  - Single leg
  - Web Loop
  - Capacity: 130-310 lbs.
- R3 # K62400471

# Roofing & Ladder Safety



## Guardian 00815 Bucket of Safe-Tie w/ Temper Anchor

- Incorporates an integrated shock absorber into the lifeline
  - Temper Reusable Anchor
  - 50' Vertical lifeline assembly
  - Steel, polyester, and nylon
  - Velocity harness (S-L)
  - 5 Gallon bucket
  - Capacity: 130-310 lbs.
- R3 # K62400491



## Guardian 00870 Little Bucket of Safe-Tie

- Roofing kit built for the roofer, by the roofer
  - Velocity harness (S-L)
  - 6' Single Leg Lanyard with shock pack
  - 1 Gallon bucket
  - Steel, polyester, and nylon
- R3 # K62400481



## Guardian 2560B Shingle Remover

- Ergonomic design with vinyl grip handles
  - Rugged steel construction
  - Versatile and lightweight
  - Heat tempered work edge
  - Pulls up to 16D nails with a fifty-four inch (54") long steel handle with ten teeth
- R3 # K62400021



## Guardian 2470 Corner Buddy Ladder Stabilizer

- Provides additional stability for ladder work at corners, flat, round, or multi-dimensional construction surfaces
  - Easily connects to nearly any ladder
  - Powder-coated for additional durability and weather resistance
  - Rubber bumpers for added protection
- R3 # K62400381



## Guardian 2481 Ladder Hook w/ Wheel

- Ideal method of securing the top of a ladder to a rooftop
  - Adjusts to fit between top 2 ladder rungs
  - Fits single or extension, wood, fiberglass, & aluminum ladders with round or "D" rung styles
- R3 # K62400011



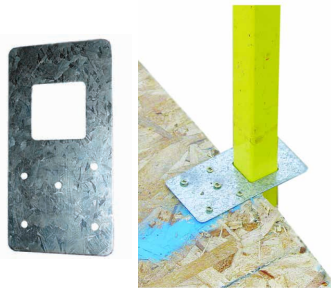
## Guardian 2500 Adjustable Steel Roof Bracket

- Designed to be used with 2x6 inch or ten inch planks
  - 10" adjustable platform
  - 3-position platform: 30°, 45°, 60°
  - Commercial grade 12- gauge steel construction
  - For easy installation and removal without damaging the shingle
- R3 # K62400361



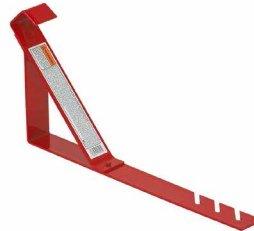
## Guardian 10800 Safe-T™ Ladder Extension System

- Designed to attach over the top of the ladder and provide a safe and easy transition from the ladder to a second surface
  - Requires no tools, drilling or bolting to hold it securely in place
  - Two offsetting handrails
- R3 # K62400271



## Guardian 15159 Gusset for Guardrail Posts

- Easy to install with either screws or nails
  - Allows for guardrail systems to be installed flush with outside walls
  - Reusable
  - Length: 5.75"
- R3 # K62400171



## Guardian Heavy Duty Fixed Roof Bracket

- Commercial grade-11 gauge steel construction
  - Heavy duty riveted construction
  - Unit has slots for easy installation & removal without damaging the shingles
  - Capacity is one worker plus forty pounds (40 lbs.) per eight foot (8') staging
- |                |      |           |
|----------------|------|-----------|
| R3 # K62400351 | 2501 | 10" x 45° |
| R3 # K62400341 | 2502 | 6" x 90°  |
| R3 # K62400331 | 2503 | 6" x 60°  |



## Guardian 3505 Pro-Line Fixed Roof Bracket

- Rounded corners eliminate shingle damage
  - Commercial grade-10 gauge steel construction
  - For use only as slideguard or material support on low slope roofs
  - Powder coat paint finish
  - Reinforced welded gusset
  - Capacity is one worker plus forty pounds (40 lbs.) per eight foot (8') staging
- R3 # K62400321 6" x 90°



## Guardian 15500 C-Slab Grabber

- Compatible with wide range of concrete slabs
  - Set-up OSHA compliant guardrail system
  - Durable, powder-coated steel
  - Anti-slip grip
  - Quick adjust handle
  - Back-up safety pin that functions to ensure complete system integrity
  - Compatible with 2x4" and 2x6" boards
- R3 # K62400161